



Willamette Valley Chapter
P.O. Box 3031 Salem, OR 97302

39th Salem Swap Meet Chemeketa Community College

Sunday June 19, 2011 7 a.m. to 3 p.m.
Vintage Auto and Related Collectibles Including Era Clothing
Food and Beverage Stand for your enjoyment
No Space Reservations are needed
All Spaces Outside on Hard Surface
Free Overnight Parking for Vendors
Free Admission and Free Parking
No Auxiliary Generators are Permitted
No Firearm Sales
Dogs Must be Kept on a Leash

Spaces 9' x 20' \$20 each

FREE DISPLAY OF YOUR VINTAGE/CLASSIC AUTO WHILE ATTENDING THE MEET

Special Area For Car Sales
Food and Beverage Sales Limited to Food Booth Only
FOR MORE INFORMATION

Lew Garrison Dale Stites
503-378-1354 503-363-8017

Willamette Valley Model A Ford Club, PO Box 3031, Salem, OR 97302

Willamettevalleymodel-a.org

Model A Ford



Club of America



Model A



Restorers Club

Next General Meeting: Mission Mill, Thomas Kay Woolen Mill Bldg, 1313 Mill Street SE, Card Room,
Thursday, June 2, 2011 7:00 pm

President Tedd Metcalfe

Historian Tom Morrison
Gene Byrnes

Vice President Lee Hardy

Sunshine Dolores Byrnes

Secretary Beauford Averette

N.W.R.G. Tom Morrison

Treasurer Gary LeMaster

Newsletter Gary LeMaster

Past President Lew Garrison

Board Members Marie Averette 11
Peggy Ramsay 11
Jim Brennan 12
Dean Hammond 12

Raffle Chair Peggy Ramsay

Tour Chair Charlie Schmidt

Programs

Social Chair

Road Cleanup Langley Jones

Swap Meet Committee Charlie Schmidt
Lew Garrison, Gary LeMaster
Dale Stites, Ron Whitworth

Newsletter Editors of the Month

January Hardy
February Hardy
March Garrison
April Schmidt
May Byrnes
June LeMaster
July LeMaster
August Morrison
September Stites
October Wasson
November
December Hardy

Board Meeting Hosts

January 20 Jones
February 17 Garrison
March 17 Ramsay
April 21 LeMaster
May 19 Morrison
June 16 Pizza Feed
July 21 Averette
August 18 Sites (potluck)
September 15 Garrison
October 20 Zielinski
November 17 Schmidt
December 10 President's Breakfast

President's Comments:

Tedd's Topics

How nice it is to feel the sun on your shoulders again, I'm so done with all that wind and rain and 40 or 50 something degree weather. Finally. You can't even work in the garage very well with that going on. I hope you are able to take on some of those chores that have needed done all winter. Plant a flower or two at least. Great tour we had to the WinCo food warehouse the other day – there is a nice article about it in this newsletter. Hey, have a look at the tour schedule, would you, there is a lot of space left, maybe this is the year you could put together a tour. Talk to Charlie Schmidt about it, I'm sure he'll give you a hand with that.

The swap meet is coming right up and there is several little chores to get involved with that would provide you the opportunity to come get in on the fun. Jody Jones, Marie Averette, Judy Garrison, are some that might help you find a task in the concession stand and Lew Garrison, Lee Hardy, Gary LeMaster, or Dale Sites could help the guys find something to help out on. (I am sure I didn't mention someone I should have – and I'm sorry for that) The point is it's a lot of fun and we'd love to have you there. I'm looking forward to seeing you there.

Tedd Metcalfe

Some material printed in this newsletter may have been borrowed from other publications. We wish to thank other clubs for sharing their newsletters with us. We are happy to share our articles and other information publication in their newsletters.

For information about the club, please contact Charlie Schmidt at (503) 263-6535

**Willamette Valley Chapter
Model A Ford Club of America
Board of Director's Meeting
May 19, 2011**

The Board of Directors Meeting was called to order at 7:30 pm, by President, Tedd Metcalfe, Those in attendance were: Tedd and Debby Metcalfe, Beauford Averette, Gary LeMaster, Ray and Peggy Ramsay, Charlie Schmidt and Tom and Verna Morison (Hosts).

The Board waived notice of time, place and purpose of the meeting.

The minutes of the May General meeting were approved as read.

The Treasurer reported that the books were up to date and in proper order. Sixteen members have not paid their dues.

Model A Ford Problems Discussed: Tom Morrison has had his engine in and out a couple times working on it.
Committee Reports: Tours: The Swap Meet is June 19. The annual Pizza Feed/Board Mtg. will be June 23 at Walery's Premium Pizza, 1555 Edgewater St. NW. The Salem-Keizer Volcanoes Baseball Game is scheduled for July 10. We will meet in the Keizer Station Mall at 4:00 pm. Enter Keizer Station from Chemawa Road and follow the road around until you come to The Beaver Store on your left. Turn left at the Beaver Store and look for Model A's parked on your left. That's where we will meet. We will then drive to the designated car display area. We will have seats with backs this year. The cost is \$11.00. Peggy Ramsay will take either cash or a check made out to Margaret Ramsay for the admission. The Amity Pancake Breakfast is July 24th. Langley Jones will lead the tour. July 30 will be the modern iron tour to Portland to see the Allure of the Automobile cars at the Portland Art Museum and the Ford day in the Park blocks. Charlie Schmidt will lead a five day tour Sept 6-10, The Diamond/Steens Mtn. Tour. Other tours are being developed.
Program: The June general meeting program will be a DVD from the club library. Ideas for programs are welcomed.
Sunshine: No report. **Socials:** No report. **N.W.R.G.:** No report. **Newsletter:** Gary LeMaster is the editor for the June issue of the Connecting Rod. **Historian:** No report. **Swap Meet:** The insurance has been secured. We will have a sign up sheet for the swap meet at the June general meeting. There will be a concession trailer clean up session Saturday, June 11 at the Stites. Meet about 9:00 am. The Swap meet set up will be Saturday, June 18. Meet at The Original Pancake House, 4685 Portland Rd. NE, at 8:00 am for breakfast or at Chemeketa Community College at 9:00 am. **Old Business:** No old business **New Business:** The meeting was adjourned at 8:10 pm.

Respectfully Submitted,
Beauford Averette, Secretary

**To Ethanol or “Not” to Ethanol
That is the question**

We all know that the President, the green people and the EPA are not old car enthusiasts, nor do they care about the damage the new gasoline does to our favored cars. Ethanol doesn't like our old cars either, but there is answer to those in the Salem/Keizer area. And that answer is Marc Nelson Oil Products (MNOP). Located at 1977 Claxter Road NE, MNOP supplies non-ethanol gasoline in 87 and 92 octane from 8-5 Monday through Friday. So, since I know how you all think, there is an additional caveat you must know about. Non-ethanol gasoline is only available for those cars 1956 and older. Their web site is www.marcnelsonoil.com. Driving directions: turn North off Hyacinth Street NE between Portland Road and the Salem Parkway onto Salem Industrial Drive NE (Parr Lumber). At the “T” turn left onto Claxter Road NE, cross the railroad tracks and follow the road to the right to the end.

TAKE ME OUT TO THE BALLGAME

At our May General Meeting we decided to bring our Model A's to the Sunday July 10th 5pm game. The Volcanoes will be playing the Tri-City (WA) Dust Devils. Our group seating will be in the upper box sections which are individual, theater style seats. The cost is \$11.00 per ticket. The box office wants only one check for our group, so I will purchase all the tickets. I will have the tickets available at the June and July General Meetings for you to purchase from me. We will be able to drive our cars to a special up-front area reserved for us to show off our cars at 4 pm and if we want, we could then move them to a more protected area from foul balls during the actual game before the 5 pm starting pitch.

We will meet in the Keizer Station Mall at 4:00 pm. Enter Keizer Station from Chemawa Road and follow the road around until you come to The Beaver Store on your left. Turn left at the Beaver Store and look for Model A's parked on your left. That's where we will meet. We will then drive to the designated car display area.

Peggy Ramsay

The Allure of the Automobile Tour Portland Art Museum

This is "an extraordinary showing of 16 of the world's most luxurious and brilliantly conceived cars from the 1930s to the 1960s, including masterpieces by Bugatti, Ferrari, and Alfa Romeo." We are planning to take this tour on Saturday, July 30, which is also the "ALL FORD DAY" of the Cars in the Park display on the downtown park blocks. Diane LeMaster has agreed to lead us on a modern iron tour into downtown Portland. Stay tuned for more details about this exciting tour.

HOW TO INSTALL A HOME SECURITY SYSTEM

1. Go to a secondhand store and buy a pair of men's used size 14-16 work boots.
2. Place them on your front porch, along with a copy of Guns & Ammo Magazine.
3. Put a few giant dog dishes next to the boots and magazines.
4. Leave a note on your door that reads:

Bubba,

Bertha, Duke, Slim & me went for more ammo and beer. Be back in an hour. Don't mess with the pit bulls; they attacked the mailman this morning and messed him up bad. I don't think Killer took part, but it was hard to tell from all the blood. Anyway, I locked all four of 'em in the house.

Be right back.

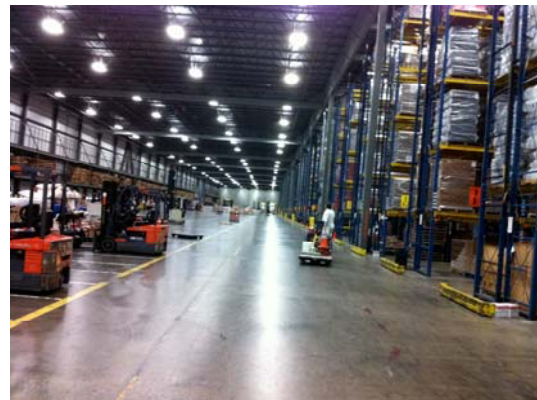
WinCo Tour—May 11, 2011

Washington, Idaho, Nevada, California, Oregon....an Employee Owned Company, Main Office in Boise



Our Tour Leader, Jim Rowen, recently retired WinCo driver, said once he retired he would be more active in the club and sure to his word this tour proved it. We all met at EZ Orchards: Tom Morrison & Gene Burns in Tom's '31 Roadster, Lee Hardy in his '30 Cabriolet, Judy & Lew Garrison and Tour Leader, Jim in Lew's '31 Slant Window 4-Dor Sedan, Ron Gilbreath in his '30 Coupe, Jean & Don Gardner, Lloyd Nix, Tedd Metcalfe, Langley Jones, Susan & Jim Brennan. Gary LeMaster met us at the warehouse. Steve Zielinski's son brought us fresh-baked donuts as we waited in the morning damp. We drove to Woodburn to eat lunch at Country Cottage. They were well prepared for us and the eats was real good and gut filling.

Our Tour Guide, Ray English, employed at WinCo for 39 years and very informative and interesting expounder on the company, the procedures, cleanliness and facts of the facility. He met us upon arrival and we began the tour of the 1.1 million sq. foot building in the Banana Room at 55*. This is where the bananas are gassed with ethylene to ripen them to perfection (without they are just cucumbers, both smelling and tasting). Next came the Citrus Room at 35* and smelling delightful. The Wet Room at 35* was next containing all other produce like lettuce, humidity higher here, as sprinklers come on periodically. We exited through heavy plastic curtain to the Front Dock where all the receiving and shipping is done for this section. We saw where the fresh fish comes in and then go out daily to the stores. Only frozen fish is stored here. We passed by the Morgue, I mean Meat Department without entering at 35*. Then we each BREIFLY took our turn in and directly out of the Ice Cream Room at minus 20* where the frozen foods are stored and where none of us desired to linger for long. From here we walked in to the Repack Area and Dry Groceries. And finally the Soap etc and dog foods are entirely separated from the food sections.



Gleaned statistics:

- 1968 this facility was located on State Street
- 1997 Perishables facility built in Woodburn
- 1998 Dry Good built and in 5 years they were out of space
- Dry Goods building approx. 600,000 sq. ft.
- Refrigerated building approx. 400,000 sq. ft.
- Ceilings about 50 ft.
- 500 employees at the warehouse
- 18 managers plus more in Dispatch
- Each Pallet of product has a "license plate" bar code with info on where it is stored. Each isle in warehouse matches the isle in the stores thus minimizing extra trips up and down the isle distributing the product in the store, cutting costs



- All product to be 4 inches off floor on pallet or temporarily on cardboard
- 19 "Sanitors" on the job, besides the regular "Janitors" (This place is CLEAN!) Pests are quickly dispatched by traps and periodic chemical control
- 75 docks for trucks in Dry Goods
- 98 docks for trucks in rest of warehouse
- 55 Selectors, men who are responsible for "picking" food for delivery to the stores
- Last big earthquake in this area 3 pallets of gallon water jugs, stacked on tubular racks, fell. All racks have since been replaced with ¼ inch reinforced steel

Thanks for a great tour, Jim! We had a wonderful time! -jg

Will you live to see 80? Here's something to think about.

I recently picked a new primary care doctor. After two visits and exhaustive lab tests, he said I was doing 'fairly well' for my age. (I just turned sixty-something.) A little concerned about that comment, I couldn't resist asking him, 'Do you think I'll live to be 80?' He asked, 'Do you smoke tobacco, or drink beer, wine or hard liquor?' 'Oh no,' I replied. 'I'm not doing drugs, either!' Then he asked, 'Do you eat rib-eye steaks and barbecued ribs?' I said, 'Not much... my former doctor said that all red meat is very unhealthy!' 'Do you spend a lot of time in the sun, like playing golf, boating, sailing, hiking, or bicycling?' 'No, I don't,' I said. He asked, 'Do you gamble, drive fast cars, or have lots of sex?' 'No,' I said.

He looked at me and said,... 'Then, why do you give a damn?'

GOT'S AND WANT'S

For sale: Manual/hydraulic tilt bed tandem axel equipment (car) trailer. It will work fine to haul a standard size car or pick-up. Good 6 ½' x 16' flatbed plank deck with 6 heavy flip-up tie downs. It has a removable electric winch for loading disabled equipment. Nice looking well built factory trailer, not too heavy, not too light. Good tires and built in lights. \$1,500.00 Tedd Metcalfe 503 463 1131

For Sale: 28/29 AA frame with front and rear axles, steering column and three (3) wheels. Asking \$100, Gary LeMaster 503-393-6069

For Sale: 1931 Model A Wide Bed Pickup. Needs complete restoration. Has 4-speed transmission. Missing starter, generator, ignition switch, and shock absorbers. Otherwise complete. Has brand X sealed beam headlights. Located in Klamath Falls. \$5,000. Contact John Schmidt at 541-882-6102, or Charlie Schmidt at 503-263-6535.

Wanted: '29 roadster or '32 Sedan Call Pete at 503-371-5396

LEXIPHILES

To write with a broken pencil is pointless.
When fish are in schools they sometimes take debate.
A thief who stole a calendar got twelve months.
When the smog lifts in Los Angeles, U.C.L.A.
The professor discovered that her theory of earthquakes was on shaky ground.
The batteries were given out free of charge.
A dentist and a manicurist married. They fought tooth and nail.
A will is a dead giveaway.
If you don't pay your exorcist you can get repossessed.
With her marriage, she got a new name and a dress.
Show me a piano falling down a mineshaft and I'll show you A-flat miner.
You are stuck with your debt if you can't budge it.
Local Area Network in Australia : The LAN down under.
A boiled egg is hard to beat.
When you've seen one shopping center you've seen a mall.
Police were called to a day care where a three-year-old was resisting a rest.
Did you hear about the fellow whose whole left side was cut off? He's all right now.
If you take a laptop computer for a run you could jog your memory.
A bicycle can't stand alone; it is too tired.
In a democracy it's your vote that counts; in feudalism, it's your Count that votes.
When a clock is hungry it goes back four seconds
The guy who fell onto an upholstery machine was fully recovered.
He had a photographic memory which was never developed.
Those who get too big for their britches will be exposed in the end.
When she saw her first strands of gray hair, she thought she'd dye.
Acupuncture: a jab well done.

DRIVING SAFETY IN OUR MODEL A's

Contributed by Tom Irwin — Thanks to The Ahooga News – May 2011

A recent blog on 365daysofa.com discussed safe driving in our Model A's. The article discussed the situation when an active touring Model A lost his brakes completely in traffic returning from a tour. It seems that the cotter pin was lost on the clevis pin which attaches to the brake pedal. The pin worked out = no brakes. The driver swerved off the road into a wall but was not injured due to his seat belts. There have been several reports of this happening

- Get under your car and check all brake connections.
- Practice stopping with your emergency brake. Be aware that it locks up quickly.
- Install seat belts.
- Be aware of your surroundings, knowing you may not be able to stop as quickly as traffic.
- Leave 10 sec between you and the car in front of you on the highway.
- Wait 2 sec when light changes to avoid light runners.
- Be aware of cars heading toward you that may make a left turn in front of you.
- Check your lug nuts, as losing a tire is not uncommon.
- Check that your brake lights and turn signals are functional.
- Be aware of cars behind you as well in front.
- Enjoy your trip.

“A” TIPS

Battery Charging

by Lynn Sondenaa — Thanks to The Ahooga News – May 2011

I am writing this article because if you do not follow some simple rules you could have some major damage. I recently had a friend blow up their 6 volt battery inside their Model A. How could this happen? This article will help to explain the possibilities.

A typical lead-acid storage battery is composed of two sets of plates, one which is made up of lead dioxide and one made of sponge lead. Electrolyte is sulfuric acid dilute with water. This solution causes the chemical action to take place between the two sets of plates. Electrolyte is also the carrier that moves electric current in the battery. This process has a byproduct of hydrogen and oxygen forming to create a very explosive gas.

So here are some safety precautions to follow when charging batteries. First, spilled electrolyte can “eat holes” in cloth, clothing and upholstery; burn skin and stain painted surfaces. Eye protection should be worn when working around batteries. Second, remove the battery caps or

vent plugs so the gas pressure will not build up and it will be released during the charging process. Third, keep cigarettes, open flames, trouble lights using incandescent bulbs and electrical sparks away. (Do not disconnect or connect electrical wires and terminals during the charging process.) Fourth, never lean over the battery when hooking up clamps or charging the battery. If you want to look inside the cells, use a mirror. Charge in a well ventilated area. Fifth, it is best not to use high-rate fast charging cycles, unless the battery is under constant observation. High charging causes violent gassing which will heat up the battery and can lead to the battery exploding.

Here are the correct steps to follow when charging a six volt, positive ground Model A battery.

1. Disconnect the – negative lead (Starter cable)
2. Battery charger is unplugged
3. Do not attempt to charge a frozen battery
4. Remove the battery caps or vent plugs
5. Check the water level (Use only distilled water)
6. Set the charge to 6 volt slow charge or trickle charge (1 to 4 amps)
7. Attach the charger ground to the - positive terminal
8. Attach the charger hot clamp to the – negative terminal
9. Plug in the battery charger. (If your charger has a timer, turn it on)
10. Monitor the battery every hour. It generally takes six to eight hours to charge a dead battery)
11. If ever mixing electrolyte *pour the acid slowly into the water.*

Battery Notes

1. The large diameter terminal is +
2. The small diameter terminal is –
3. Red is generally positive +
4. Black is generally negative –
5. Avoid accidental “grounds” resulting in sparks or breaking live circuits which results in sparks.
6. If the battery charger amp gauge needle pegs, you are probably connected wrong.
7. If the battery water appears to hard boil, you are charging at too high of an amperage or you are connected wrong.
8. I would advise you to place large tags on your charger leads so you have a visual of the positive and negative leads
9. The battery charger needs to be in a dry place for charging, not wet.
10. OPTIMA batteries can only be trickle charged (1 to 2 amps).

The Connecting Rod
P.O. Box 3031
Salem OR 97302

Upcoming Events!

Jun 2	Thurs.	<u>General Meeting</u>
Jun 11	Sat.	Trailer Cleanup - 9 am at Stites
Jun 18	Sat.	SWAP MEET Setup – 9 am
Jun 19	Sun.	SWAP MEET
Jun 23	Thurs.	Pizza Feed / Board Mtg. 6 pm Walery's
Jul 10	Sun	Volcanoes Baseball Game 4 pm at Beaver store
Jul. 24	Sun.	TOUR: Amity Pancake Breakfast & Vintage Car Show. Len Sanders barn & garage tour
Jul 30	Sat	Allure of the Automobile –Portland Art Museum. All Ford Day details to follow
Aug. 1-5	Mon.-Fri.	NW Regional Meet, Wilsonville
Sep.6~10	Tue.-Sat.	TOUR: Diamond / Steens Mtn.
Sep. 10	Sat.	International Model A Ford Day